

Andermatt

A vision for Swiss Alpine living

Gotthard Residences | Penthouse 902

Switzerland's Crossroads

Nestled amidst stunning mountain scenery, **Andermatt** offers a unique combination of natural beauty, a rich history, world-class amenities, and unparalleled hospitality.



By car

The journey to Andermatt is accompanied by panoramic views of Switzerland's majestic landscape.

Lucerne	50 mins.
Zurich	1 hour 30 mins.
Milan	2 hours
Geneva	3 hours 30 mins.
Munich	4 hours 20 mins.



By plane

You can fly into Zurich, Basel and Milan airports. The nearest airstrip for private aircraft is in Buochs, only a 45-minute drive away.

Flight times from Zurich:

London	1 hour 25 mins.
Berlin	1 hour 25 mins.
Stockholm	2 hours 25 mins.
New York	8 hours 50 mins.

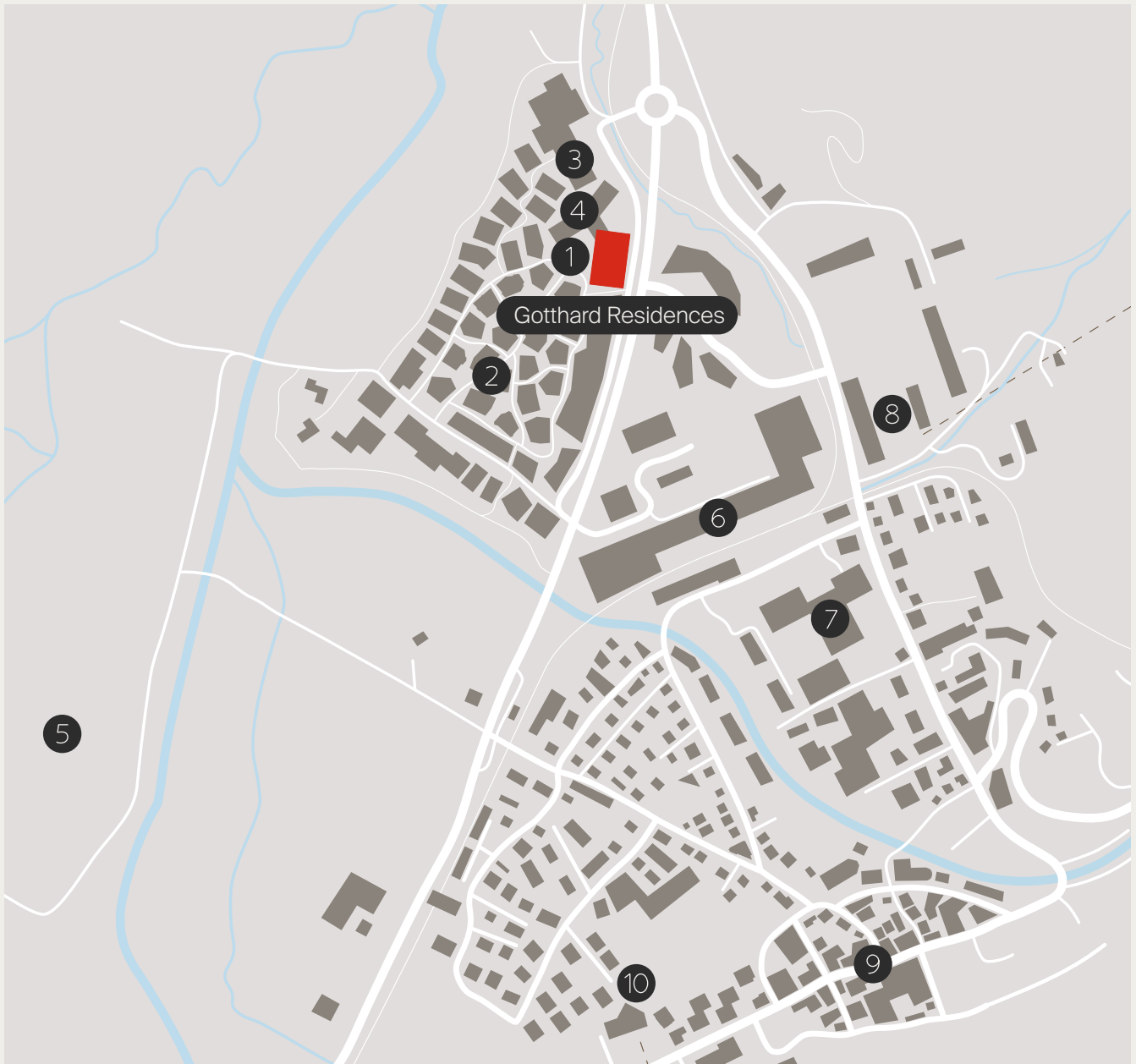


By train

Zurich is just two hours away with a change in Göschenen. Andermatt is also on the spectacular Glacier Express route.



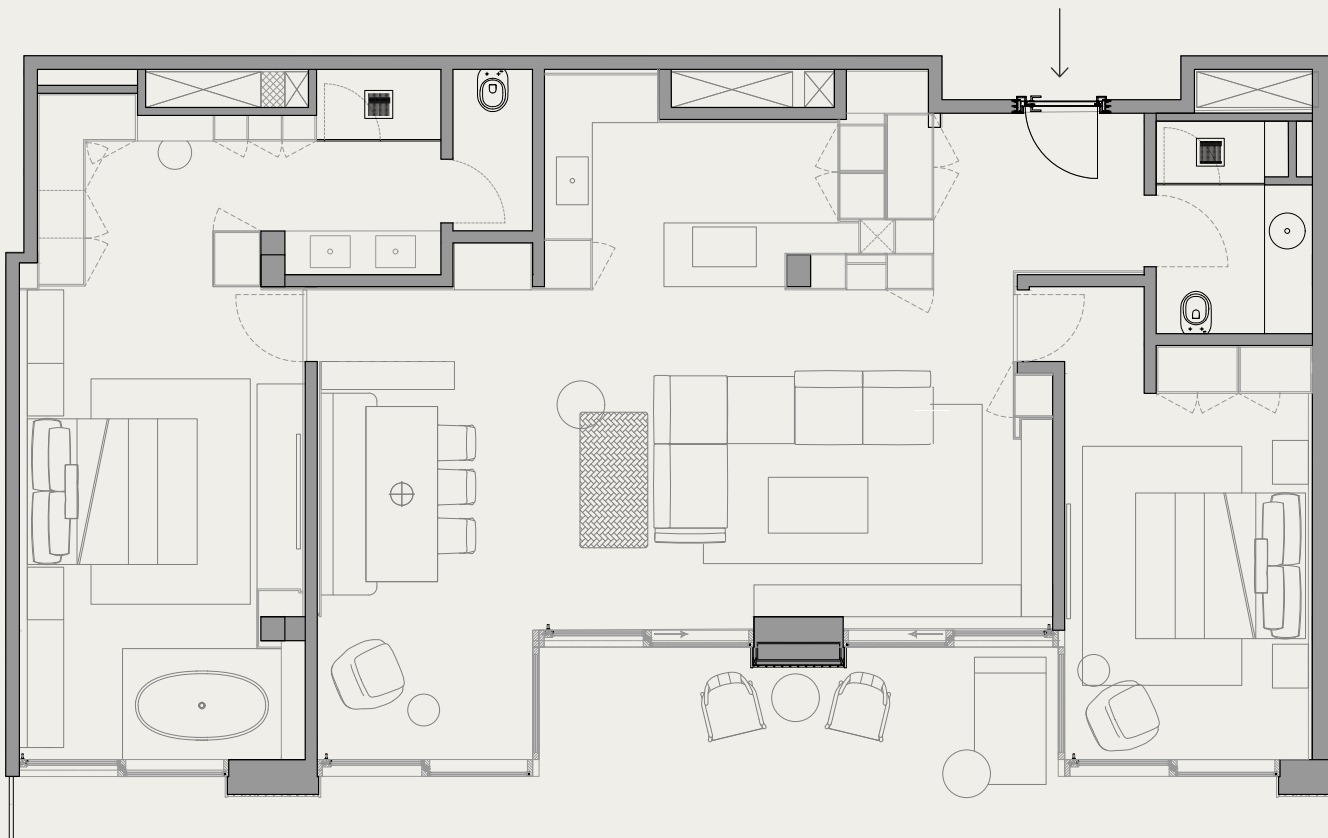




Find **your place** in the valley.

- 1** **Piazza Gottardo**
Central meeting point of Andermatt Reuss, hosting events and concerts all year round.
- 5** **Andermatt Golf Course**
18-hole, par 72 championship course and member of Leading Golf Courses of Switzerland.
- 8** **Gütsch-Express**
The valley station of the cable car to Gütsch at 2,340 m – a spectacular viewpoint with two Michelin-starred restaurants.
- 2** **Furkagasse**
Main shopping and dining street.
- 6** **Railway station**
Connecting you to Sedrun and via the Treno Gottardo in Göschenen to Zurich, Basel and Ticino. Andermatt is also a main stop on the legendary Glacier Express.
- 9** **Gotthardstrasse**
Historic village centre with rustic Alpine charm, authentic restaurants and vibrant bars.
- 3** **Andermatt Concert Hall**
World-class music and events venue.
- 7** **The Chedi Andermatt**
Five-star Alpine hospitality at its finest and home to Michelin-starred 'The Japanese' restaurant.
- 10** **Gemsstockbahn**
This legendary cable car is the entry point to the Gurschen Glacier slopes and the freeriders' paradise.
- 4** **Radisson Blu Hotel Reussen**
Four-star superior hotel featuring the Uela Spa with 25-meter pool, sauna and steam room.

Gotthard Residences | Penthouse 902



Type _____ Penthouse
Unit _____ 902
Floor _____ 9
Bedrooms _____ 2
Bathrooms _____ 2
FF&E _____ Included
Parking _____ Included
Size _____ 129.75 m²
Construction year _____ 2018
Availability _____ Available now
Price _____ 3,590,000 CHF







Living / Dining

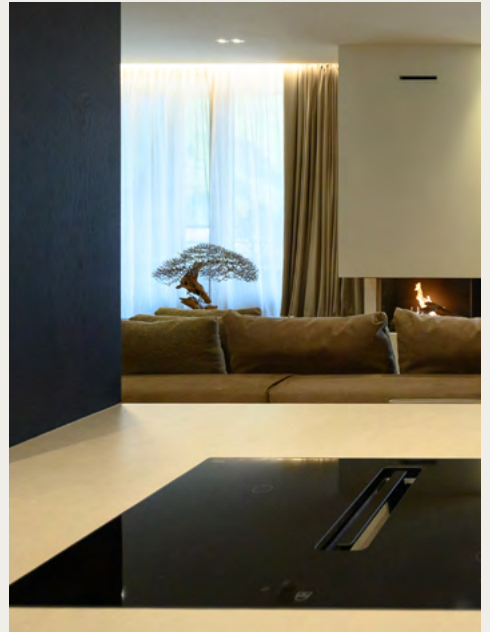


Balcony





Kitchen



Dining





Master Bedroom





Bedroom 2

Corridor





Bathroom 1



Bathroom 2



Real Estate Sales Suite

Bahnhofplatz 3, 6490 Andermatt
+41 41 888 77 99
realestate@andermatt-swissalps.ch
andermatt-realestate.ch



an ORASCOM
DEVELOPMENT
COMMUNITY

Disclaimer and reservations: This brochure shows actual photography of the apartment. No claims may be construed based on any plans, drawings, pictures, interior renderings, 3D views or descriptions. The plans shall have no legal effect in the sense of land register plans or land register enclosures. Modifications, adjustments and/or dimensional changes of the project for technical, architectural, legal or aesthetic reasons remain expressly reserved at all times. Furniture and furnishings depicted in renderings are to be construed as examples only and are not included in sales prices. This document, in whole or in part, may not be reproduced and/or passed on to third parties without the express written consent of the development company or one of its agents. Unsolicited brokers are not entitled to any compensation for their services, neither from the development company nor from hired agents. This sales brochure and any associated documentation are intended as initial information only and not as an offer. These documents will not form a part of any sales agreements or work orders which may follow.