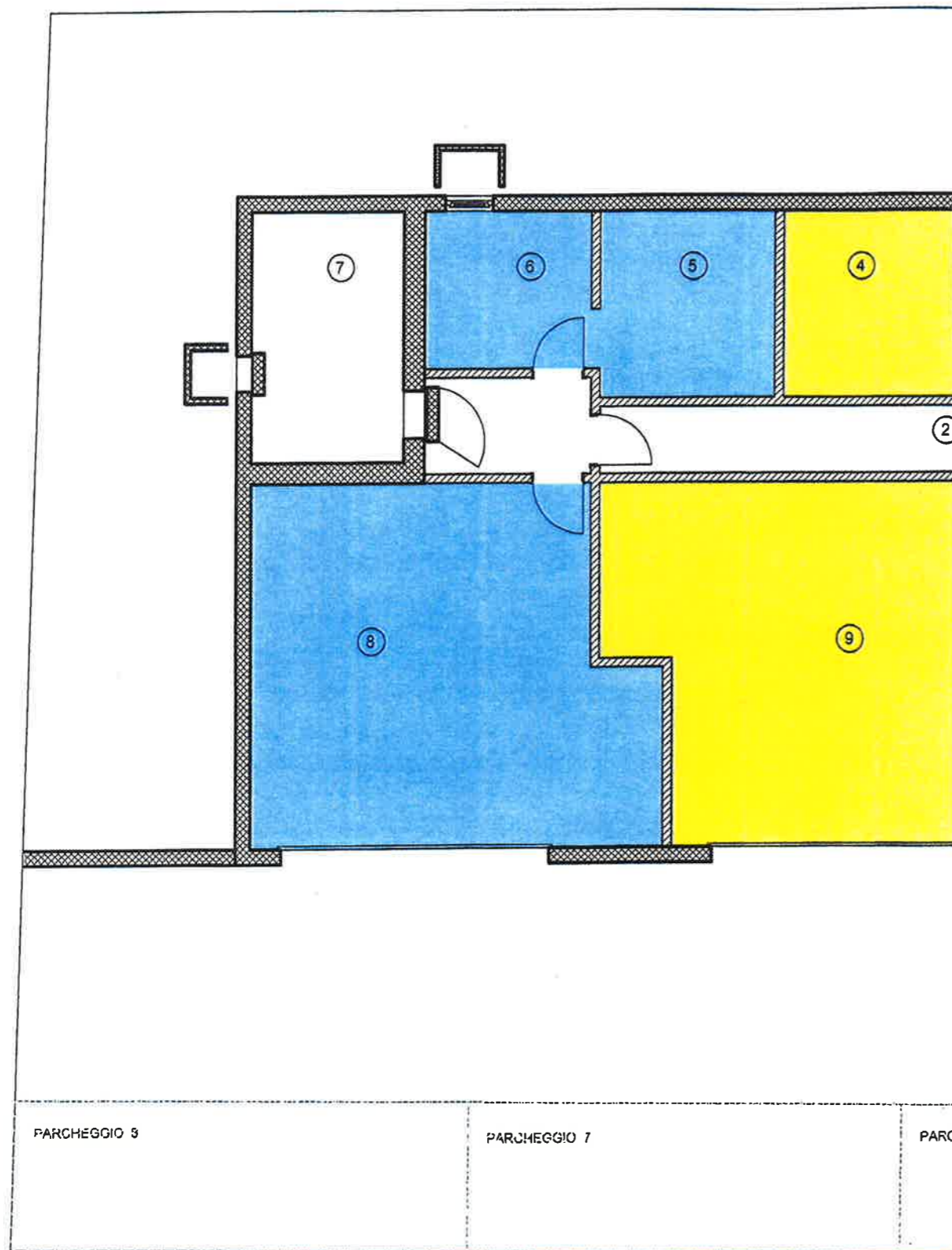


NUOVA CASA BIFAMILIARE AL MAPPALE NO. 48 A GRONO

PIANO CANTINA 1 : 100



- PARTE COMUNE**
PPP no. 14 SET, 2012
- APPARTAMENTO 1**
PPP no.
- APPARTAMENTO 2**
PPP no.

Subij...

PARTE COMUNE: PPP no.

P. CANTINA

1. Vano Scale	mq	11.75
2. Corridolo	mq	13.90
7. Rifugio PCI	mq	10.74
10. Loc. tecnico	mq	22.09

APPARTAMENTO 1: PPP no.

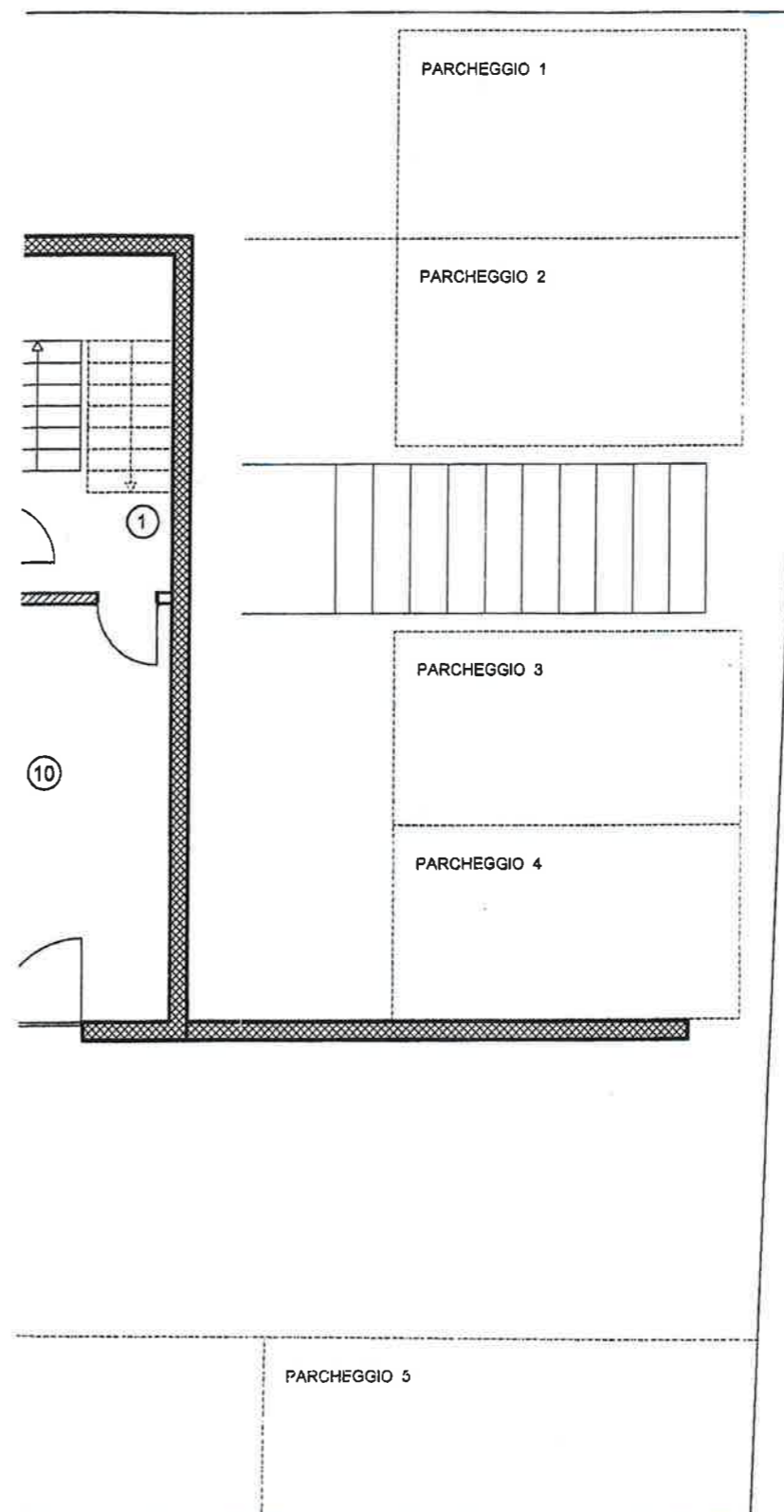
P. CANTINA

3. Lavanderia	mq	06.90
4. Cantina	mq	09.07
9. Garage	mq	39.15
Parceggi		1, 2, 5, 6

APPARTAMENTO 2: PPP no.

P. CANTINA

5. Lavanderia	mq	09.07
6. Cantina	mq	07.34
8. Garage	mq	38.25
Parceggi		3, 4, 7, 8



[Handwritten signatures]