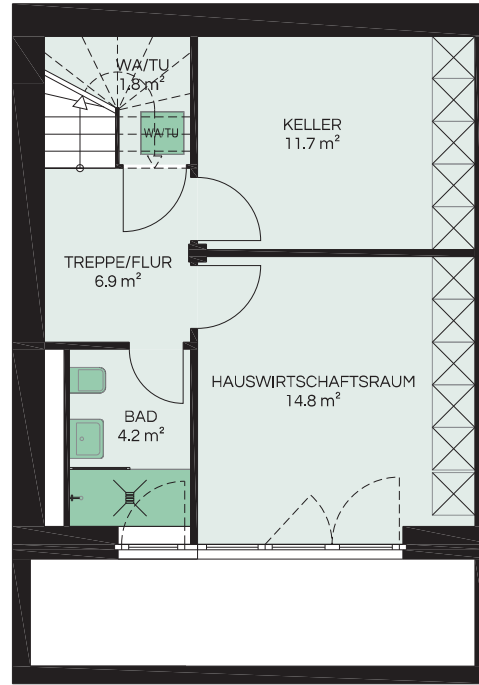
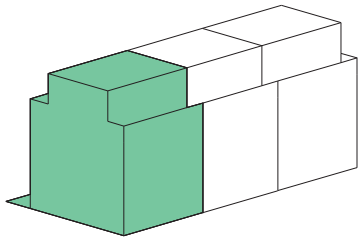


# neuhaus

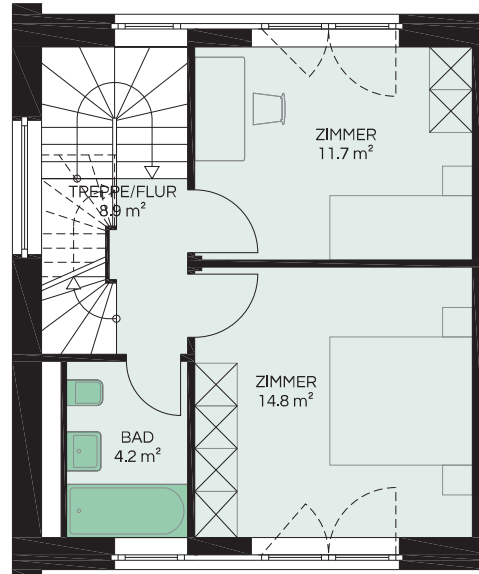
## BASEL

### 4.5-Zimmer Haus

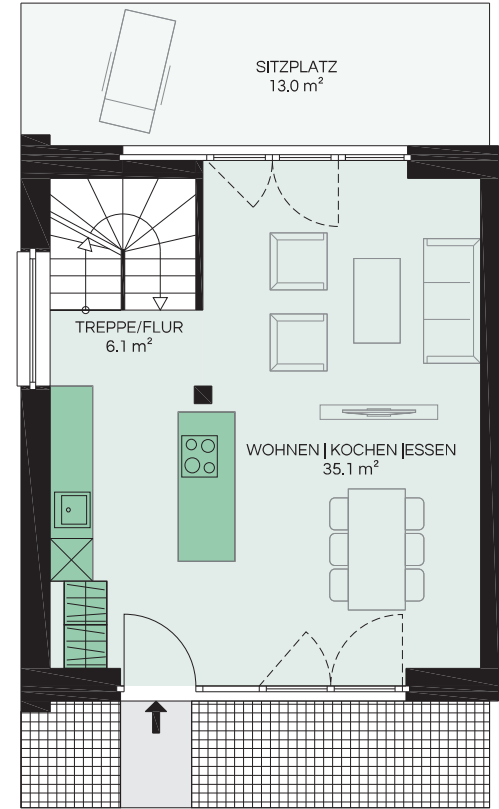
Haus - Nr.	T 4-1
Geschoss	UG/EG/1.OG/DG
Wohnfläche	127.5 m <sup>2</sup>
Terrasse	16.7 m <sup>2</sup>
Sitzplatz	13.0 m <sup>2</sup>
Rasen	12.5 m <sup>2</sup>
Keller	11.7 m <sup>2</sup>



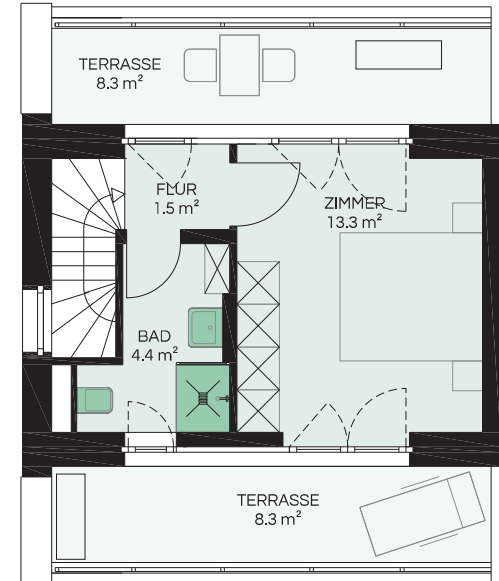
UNTERGESCHOSS



1. OBERGESCHOSS



ERDGESCHOSS



DACHGESCHOSS

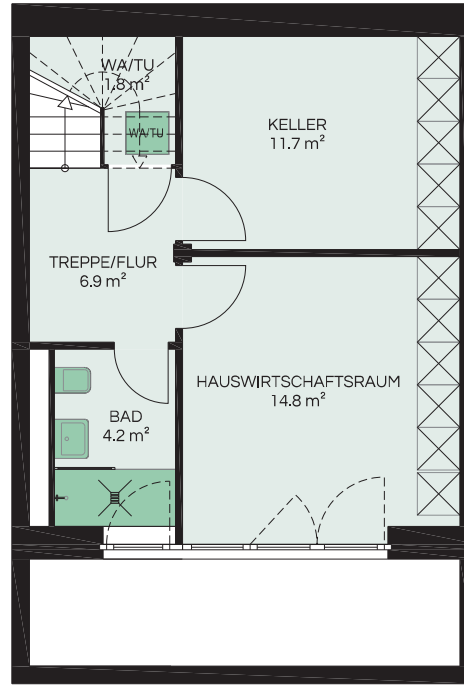
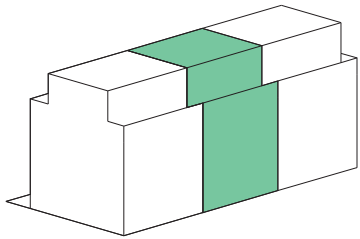


# neuhaus

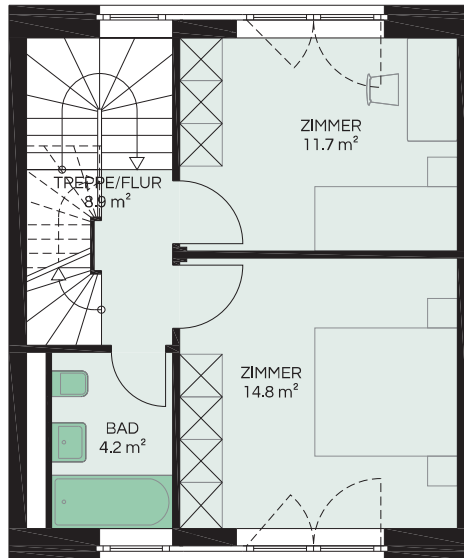
## BASEL

### 4.5-Zimmer Haus

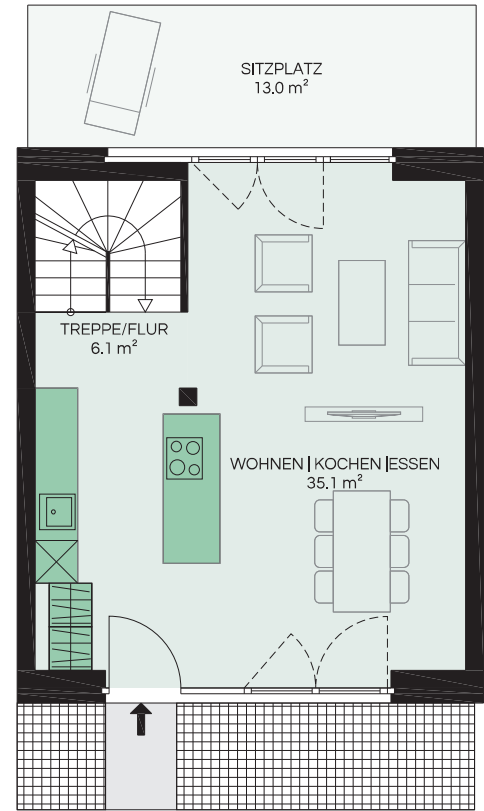
Haus - Nr.	T 4-2
Geschoss	UG/EG/1.OG/DG
Wohnfläche	127.5 m <sup>2</sup>
Terrasse	17.0 m <sup>2</sup>
Sitzplatz	13.0 m <sup>2</sup>
Rasen	12.5 m <sup>2</sup>
Keller	11.7 m <sup>2</sup>



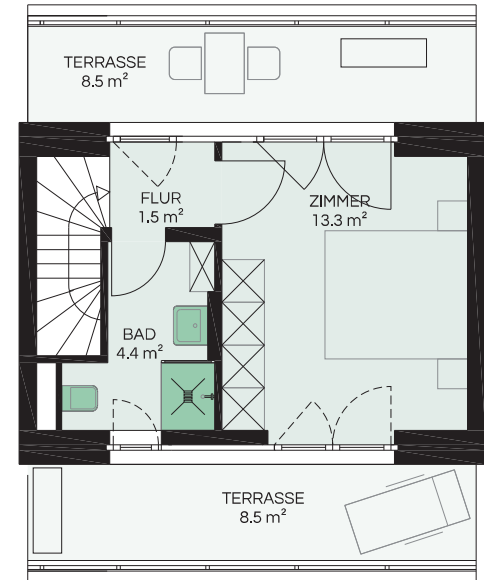
UNTERGESCHOSS



1. OBERGESCHOSS



ERDGESCHOSS



DACHGESCHOSS

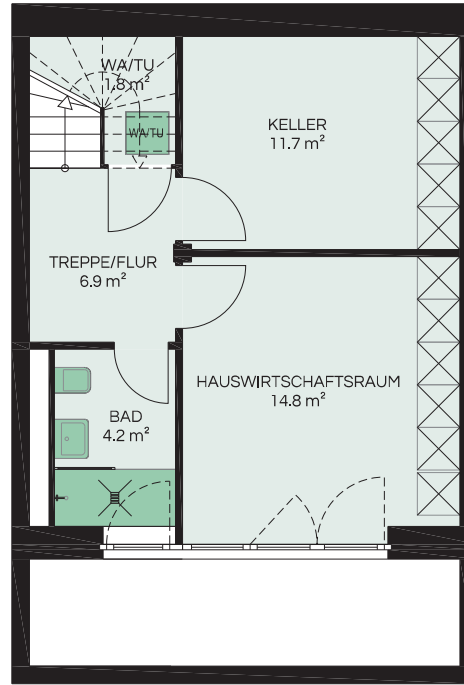
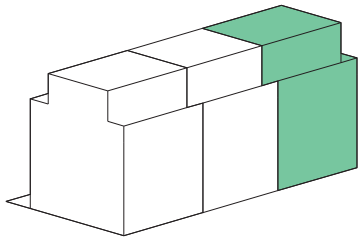


# neuhaus

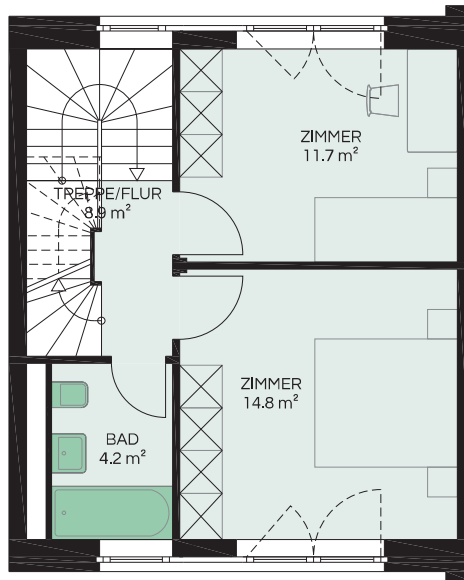
## BASEL

### 4.5-Zimmer Haus

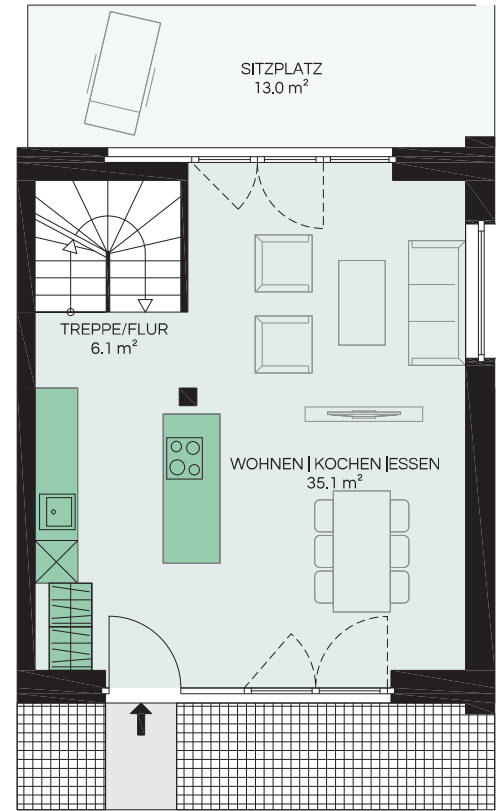
Haus - Nr.	T 4-3
Geschoss	UG/EG/1.OG/DG
Wohnfläche	127.5 m <sup>2</sup>
Terrasse	16.7 m <sup>2</sup>
Sitzplatz	13.0 m <sup>2</sup>
Rasen	12.5 m <sup>2</sup>
Keller	11.7 m <sup>2</sup>



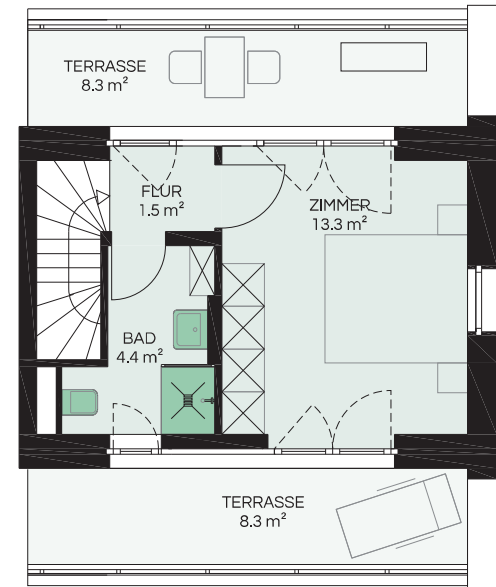
UNTERGESCHOSS



1. OBERGESCHOSS



ERDGESCHOSS



DACHGESCHOSS

